

SL Series Injectors (P.N. 33081)

- Viton O-rings standard to protect against high heat & synthetic lubricants
- All injectors are shipped with vinyl cover caps standard
- Operating pressures to 1,000 psi
- Adjustable oil output
- Visual operating indicator pin
- Includes feed line fill fitting

SL Series Specifications

Operating Pressure :Max 1000 psi (69 BAR) ; Minimum 750 psi (52 BAR)

Lube Output: - Adjustable .050 cu. in. (.82 cc) - .500 cu. in. (8.2 cc)

Vent/Relief Pressure:150 psi (10 BAR) or less

Lubricants Oil - semi fluid grease

Seals Viton o-rings (70 durometer) & hytrel packings

Max Temperature: 200°F (93°C)

Material :Steel with zinc and yellow chromate plating

Pipe Connections :Injector inlet - 1/2" NPT ;Injector outlet - 1/4" NPT



BL Series Grease Adjustable Injectors

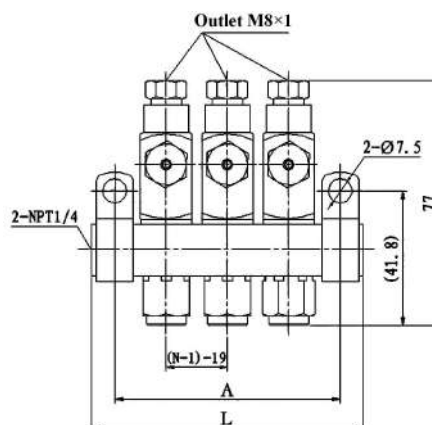
Single and manifold injectors are adjustable up to 0.003 cubic inches discharge per cycle. Each manifold includes two mounting clips and screws (1/4"–20 thread x 1/2" long hex head).

Adjustment

Injector output is controlled by the position of the indicator cap. The location of the cap determines the travel of the discharge piston. When the indicator is fully tightened onto the measuring chamber, lubricant output is decreased to a minimum. Retracting the indicator cap two full turns permits a maximum of .003 cu. in. to be discharged. Turning the indicator cap beyond two full turns will not increase lubricant output. When the individual injector has been adjusted to the desired output, tighten locknut against face of the indicator cap.

Check discharge output from injector if cap is adjusted to less than 1/2 turn from minimum.

Use a clean oil type and viscosity as recommended by machine manufacturer. Check compatibility with synthetic lubricants.



Technical Data

Model	P.N.	Number outlets	Work pressure	Viscosity	Discharge	A	L
		N	MPa			mm	mm
BL	33071	1	8.3~24.1	000#~2#	0.016 ~0.131	32	44
	33072	2				51	63
	33073	3				70	82
	33074	4				89	101